

EAST MISHAWAKA TRANSMISSION LINE PROJECT

Indiana Michigan Power representatives plan power grid upgrades to improve electric reliability for customers in Mishawaka and St. Joseph County. The East Mishawaka Transmission Line Project involves rebuilding approximately 4 miles of electric transmission line.

WHAT

The project involves rebuilding about 4 miles of 138-kilovolt transmission line from an existing power pole near Beech Road to Twin Branch Substation off Twin Lakes Drive.

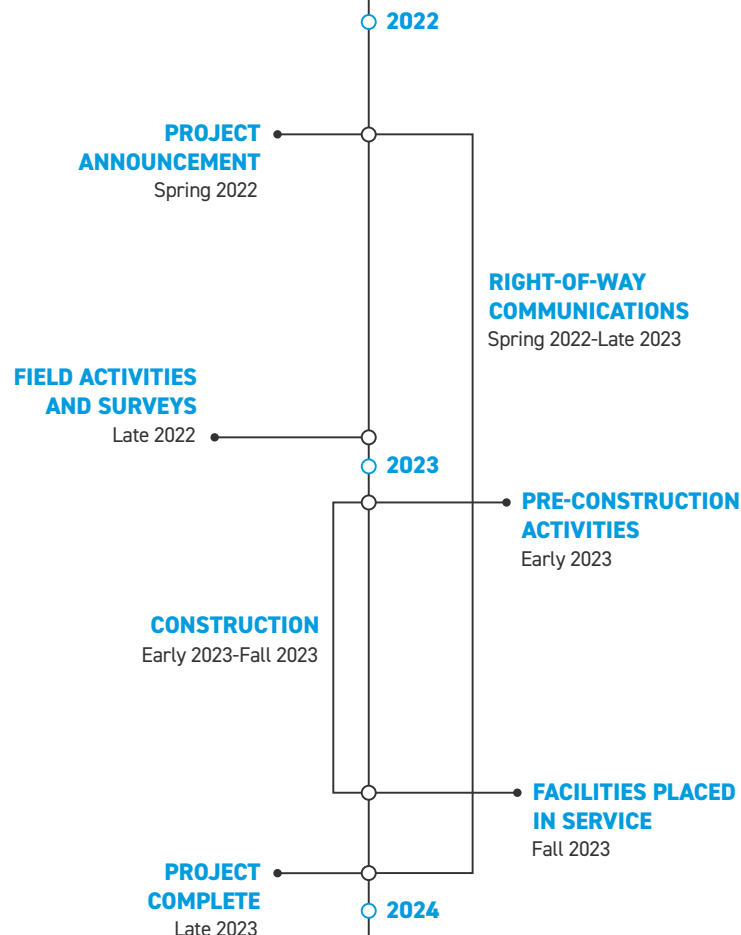
WHY

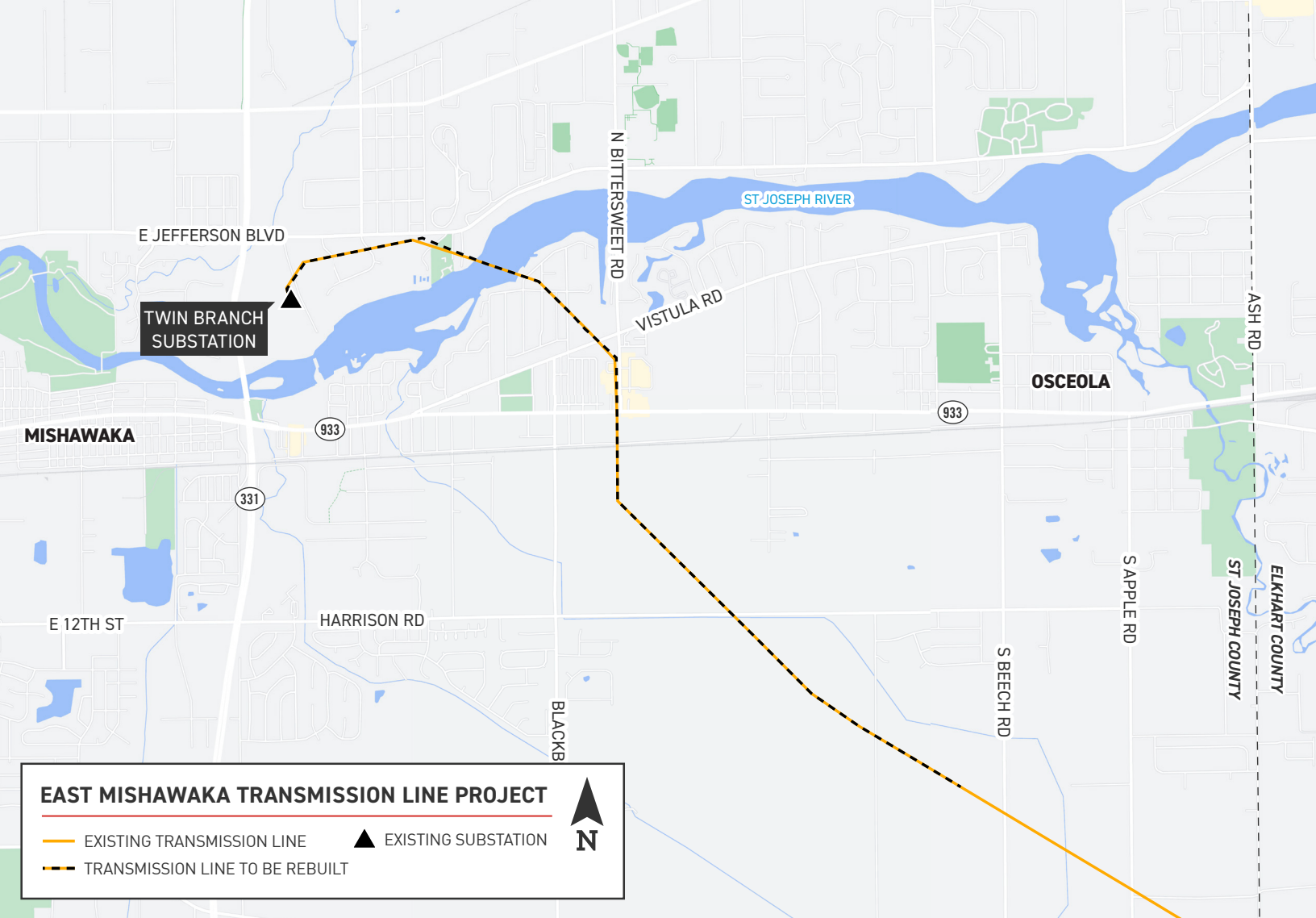
The project strengthens the electric transmission system by replacing aging lattice towers from the 1920s with modern steel poles. The existing transmission line consists of damaged equipment and requires frequent maintenance in its current condition. Rebuilding the line with modern equipment improves the line's operational performance, reduces the likelihood of extended power outages and enhances electric reliability for area customers.

WHERE

The project area includes:

- Mishawaka
- Penn Township in St. Joseph County



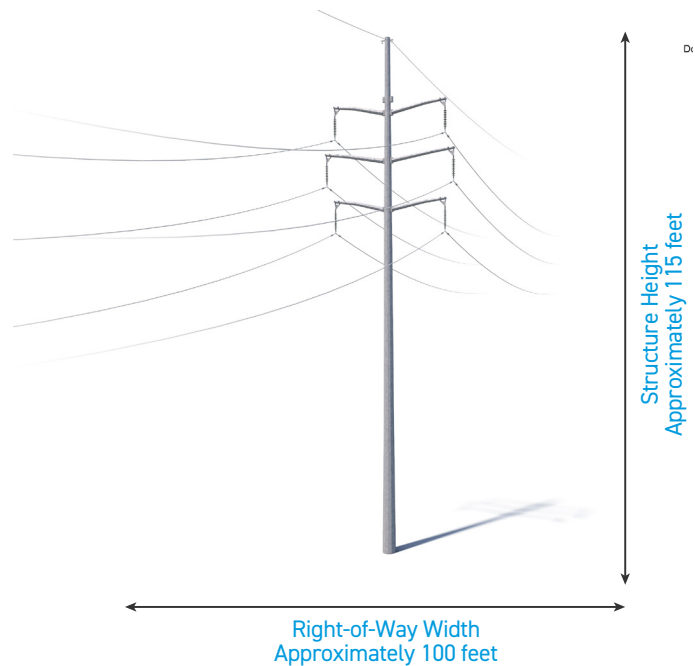


TYPICAL STRUCTURES

The project involves installing steel poles.

Typical Pole Height: [Approximately 115 feet*](#)

Typical Right-of-Way Width: [Approximately 100 feet*](#)



*Exact structure, height, and right-of-way requirements may vary.

WE VALUE YOUR INPUT. PLEASE SEND COMMENTS AND QUESTIONS TO:

BRIAN RECKER • PROJECT OUTREACH SPECIALIST

BRECKER@AEP.COM • 380-205-5381

INDIANAMICHIGANPOWER.COM/EASTMISHAWAKA