

TILLOTSON AVENUE TRANSMISSION LINE PROJECT

Indiana Michigan Power representatives plan power grid upgrades to improve electric reliability for customers in northwest Muncie. The Tillotson Avenue Transmission Line Project involves upgrading about 4 miles of transmission line and removing about 1 mile of transmission line.

WHAT

The project involves:

- Upgrading about 3 miles of transmission line between Delaware Substation, off North Shaffer Road, and Bethel Substation, off North Elizabeth Avenue
 - Building .5 miles of overhead transmission line between Delaware Substation and West Riggan Road
 - Relocating .5 miles of transmission line underground from West Riggan Road to West Twickingham Drive
 - Rebuilding 2 miles of overhead transmission line from West Twickingham Drive to Bethel Substation
 - Removing about 1 mile of transmission line between Delaware Substation and West Twickingham Drive
- Rebuilding about 1 mile of underground transmission line between Bethel Substation and Kenmore Substation, near the intersection of North Tillotson Avenue and West Riverside Avenue

Removing the existing 1-mile section of power line involves removing transmission wires and tops of poles. Lower-voltage distribution wires, third-party utilities and associated poles may remain.

WHY

The project strengthens the local electric transmission system by replacing aging poles and wires that date back to the 1960s with modern equipment.

The aging underground facilities are difficult to identify and repair which often leads to prolonged power outages. The power line has experienced several of these extended power outages in recent years due to these issues.

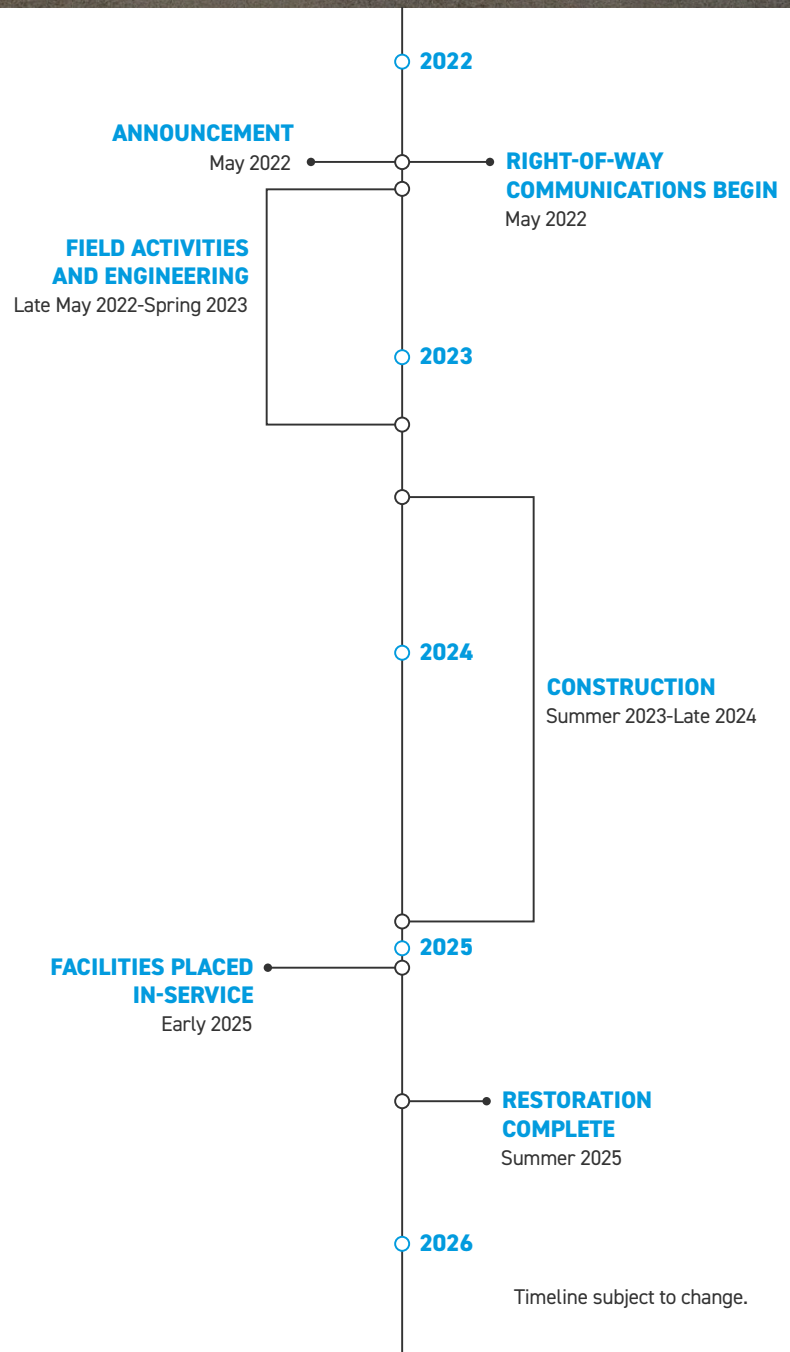
The upgrades improve the line's operational performance, reduce the likelihood of extended power outages and enhance electric reliability for area customers.

WHERE

The project area includes:

- City of Muncie
- Center and Hamilton townships in Delaware County

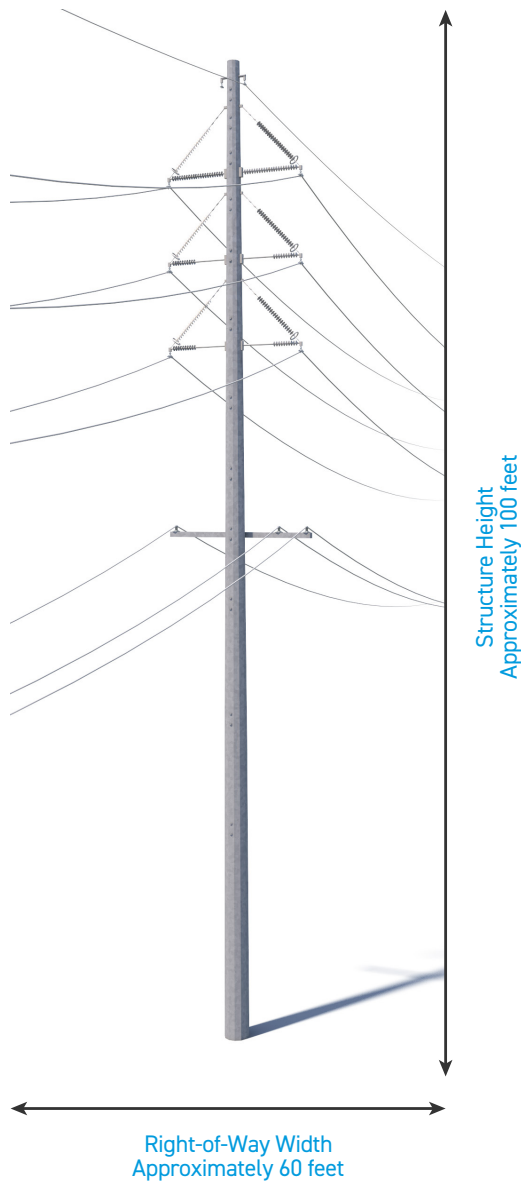
Company representatives plan to build the majority of the power line in or near the existing right-of-way, which may require acquiring new or updating existing property easements.



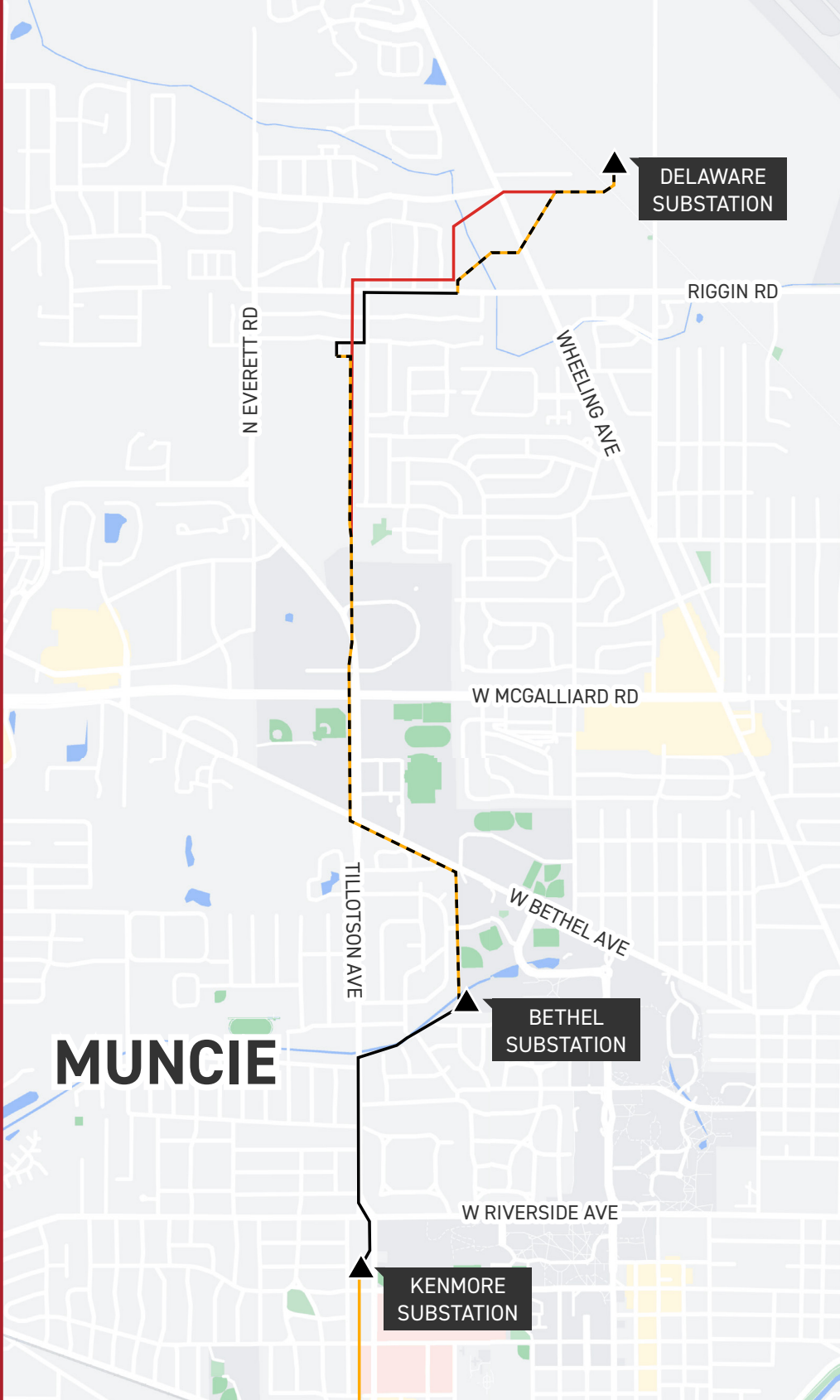
TYPICAL STRUCTURES

Sections of the project involve installing steel poles.

Typical Pole Height: **Approximately 100 feet***
Typical Right-of-Way Width: **Approximately 60 feet***



*Exact structure, height, and right-of-way requirements may vary.



TILLOTSON AVENUE TRANSMISSION LINE PROJECT

- TRANSMISSION LINE TO BE REBUILT
- UNDERGROUND TRANSMISSION LINE
- TRANSMISSION LINE TO BE REMOVED
- EXISTING SUBSTATION
- EXISTING TRANSMISSION LINE



WE VALUE YOUR INPUT. PLEASE SEND COMMENTS AND QUESTIONS TO:
ERIC GIFFEY • PROJECT OUTREACH SPECIALIST
EAGIFFEY@AEP.COM • 380-205-5044
INDIANAMICHIGANPOWER.COM/TILLOTSONAVENUE

