

TATUM AREA

TRANSMISSION IMPROVEMENTS PROJECT

**SOUTHWESTERN
ELECTRIC POWER
COMPANY**

An AEP Company

BOUNDLESS ENERGY™

Southwestern Electric Power Company (SWEPCO) representatives plan to invest approximately \$16 million to upgrade the electric transmission system in the Tatum area. Crews plan to begin construction in fall 2022 and conclude by summer 2023.

WHAT

The project involves:

- Rebuilding approximately 7 miles of 138-kilovolt power line between the Knox Lee Substation, located near Lake Cherokee, and the Rock Hill Substation, located off FM Road 1794
- Replacing 3 additional miles of wire on existing poles
- Making minor upgrades to substation equipment

WHY

Project benefits:

- Replaces deteriorating wooden poles from the 1950s with modern steel poles to reduce maintenance frequency and strengthen the line against weather impacts
- Upgrades the local power grid to ensure continued electric reliability for customers
- Upgrades substation equipment to decrease the likelihood of larger, community-sustained outages

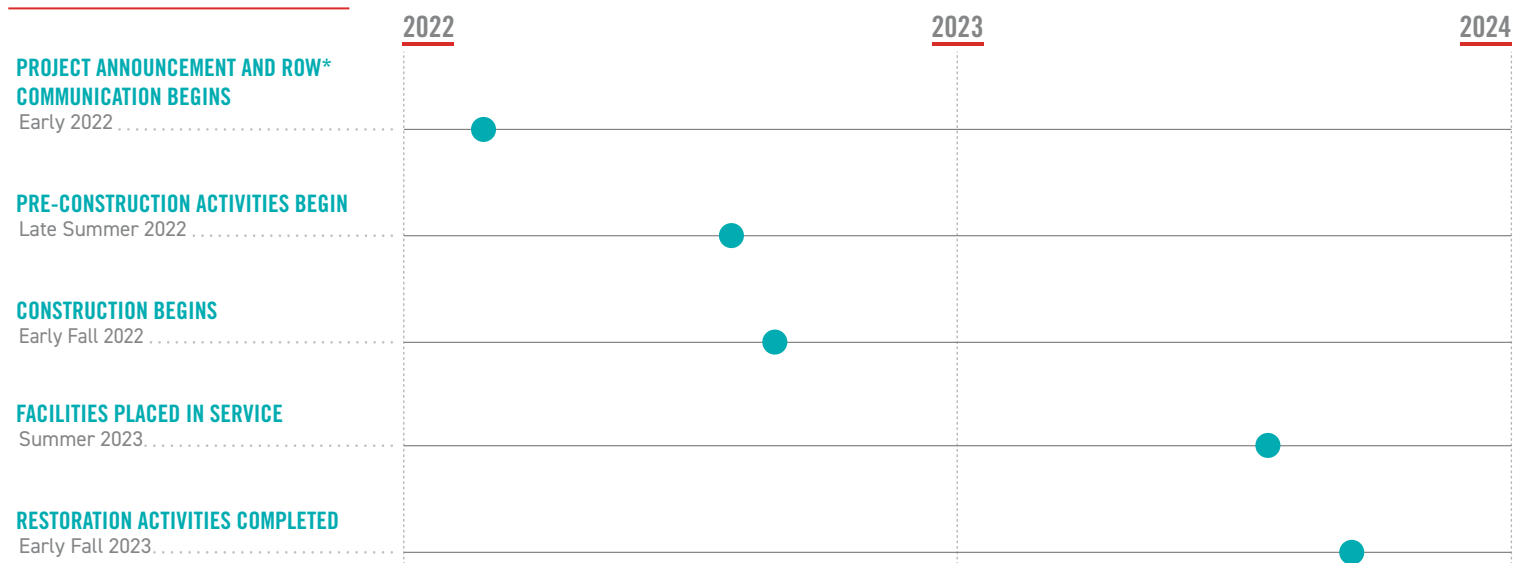
WHERE

The project area includes:

- City of Tatum
- City of Easton
- Gregg County
- Rusk County
- Panola County

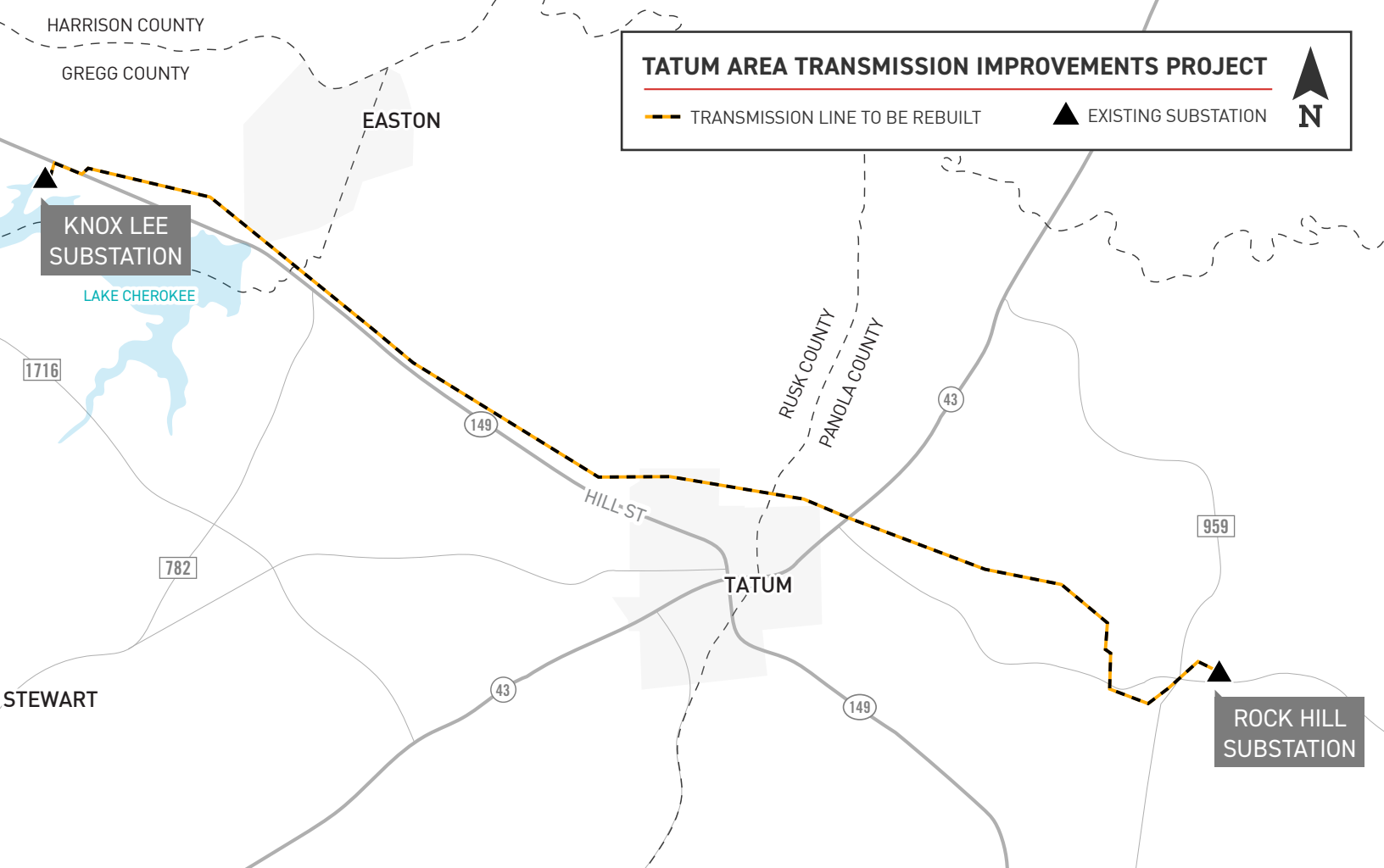


PROJECT SCHEDULE



*ROW: Right-of-Way

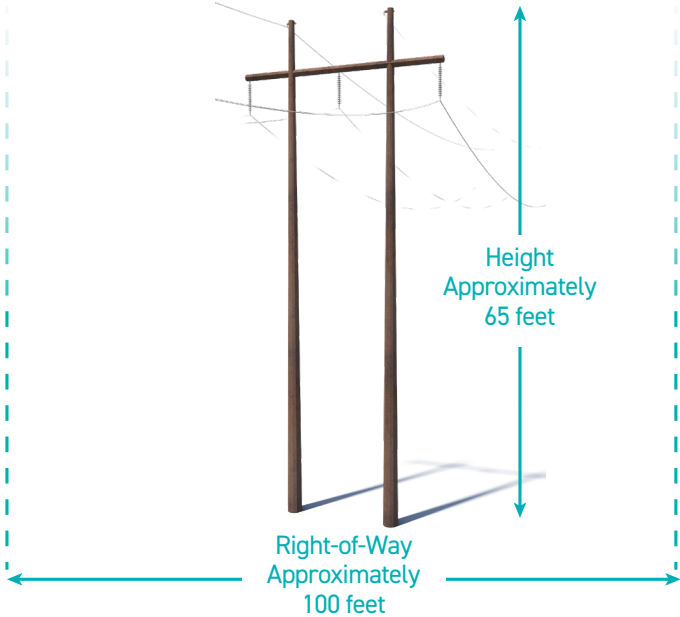
**Timeline subject to change.



TYPICAL STRUCTURES

SWEPCO plans to use weathering steel h-frame structures for this project.

- Typical Structure Height: **Approximately 65 feet**
- Typical Distance Between Structures: **Approximately 650 feet**
- Typical Right-of-Way Width: **Approximately 100 feet**



*Exact structure, height and right-of-way requirements may vary

SWEPCO VALUES YOUR INPUT ABOUT THIS PROJECT. PLEASE SEND COMMENTS AND QUESTIONS TO:

MATTHEW HAMES

Project Outreach Specialist
 (918) 879-0453
 mhames@aep.com
[SWEPCO.com/TatumArea](https://www.swepcoco.com/TatumArea)

