

GLENMARY

SUBSTATION PROJECT

Appalachian Power representatives plan upgrades to the electric transmission system in Roanoke County. The Glenmary Substation Project involves construction of a new office building, substation and approximately a quarter of a mile of transmission line. Company representatives expect construction to begin Spring 2021 and conclude by the end of the year.



WHAT

The project involves building the following in the Roanoke County Center for Research and Technology (CRT):

- A new office building for Appalachian Power equipment and employees
- A substation
- Approximately a quarter of a mile of transmission line

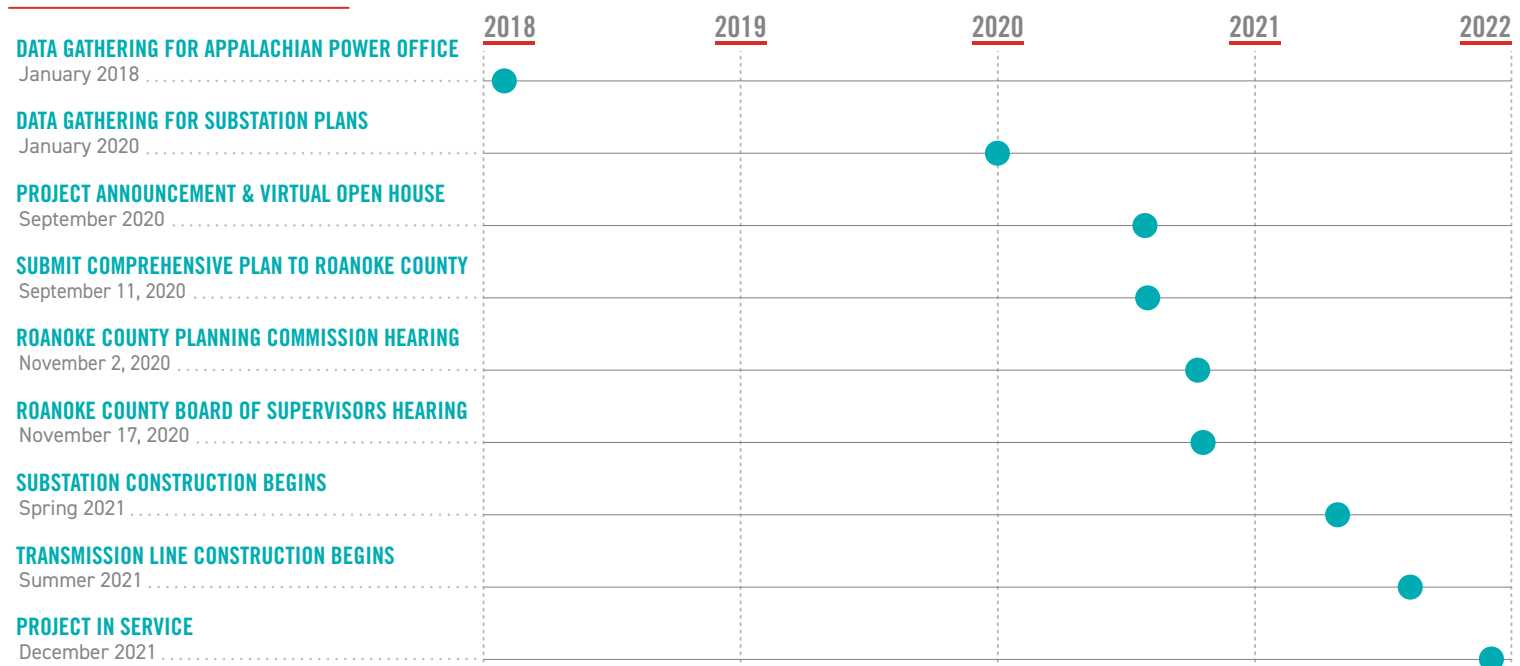
WHY

- Provide an additional source of power to the Roanoke County Center for Research and Technology and to Appalachian Power's new office.
- Improve electric reliability for area customers
- Increase economic development opportunities

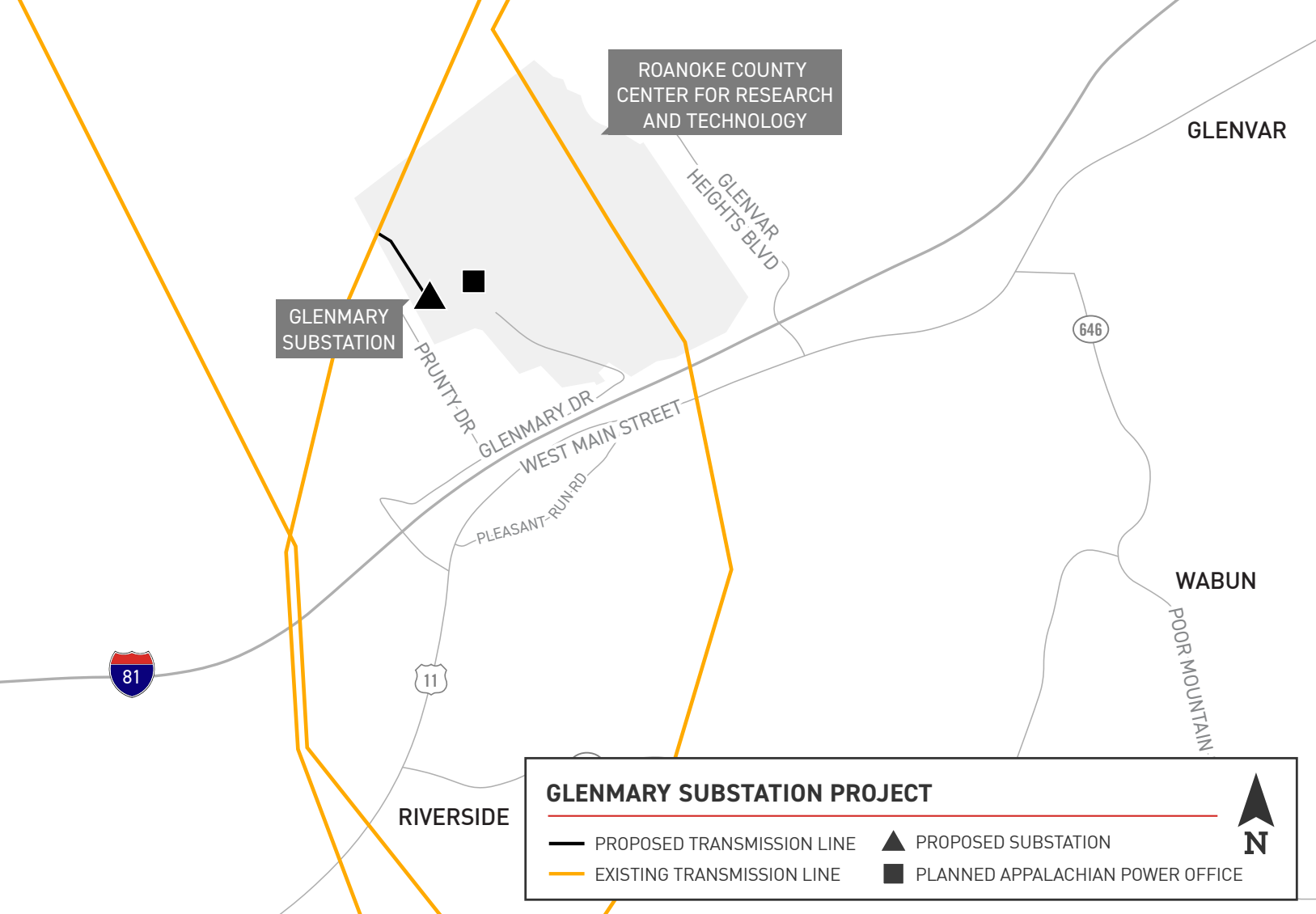
WHERE

The upgrades are located off of Glenmary Road in the Roanoke County Center for Research and Technology. The new transmission line will exit the substation to the northwest, travel approximately a quarter of a mile and connect to an existing power line.

PROJECT SCHEDULE



Note: Timeline subject to change.



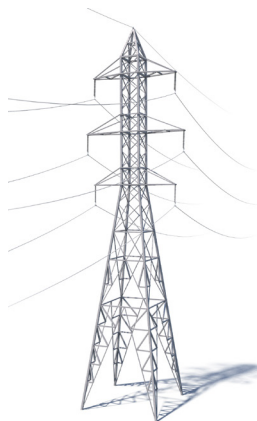
TYPICAL STRUCTURES

Crews plan to build the transmission line using lattice towers within the Roanoke County Center for Research and Technology.

At Appalachian Power, we are committed to meeting the energy needs of customers while protecting the environment and natural beauty of the region.

Proposed Structure Height: 90 - 100 feet*

*Exact structure and height may vary



TYPICAL SUBSTATION

Substations serve as electrical intersections converting the power to voltage levels for use in homes, businesses and industrial facilities.

*Substation shown is a general depiction of the proposed facilities for the project. It does not represent final design.



APPALACHIAN POWER VALUES YOUR INPUT ABOUT THIS PROJECT. PLEASE SEND COMMENTS AND QUESTIONS TO:

CORTNEY MUSTARD

Project Outreach Specialist

833-313-3743

camustard@aep.com

AppalachianPower.com/Glenmary

