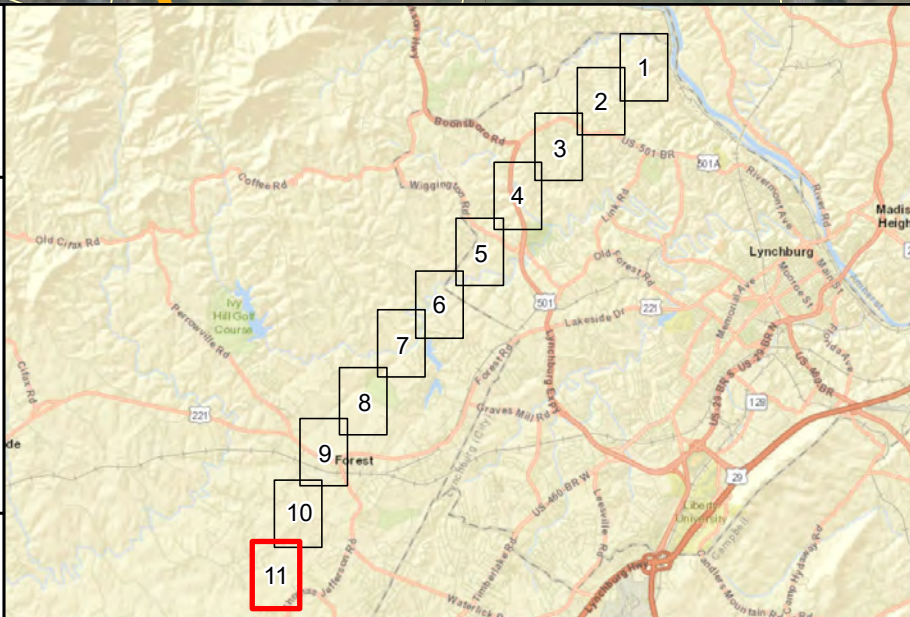


▲ EXISTING AEP SUBSTATION  
 — EXISTING TRANSMISSION LINE TO BE REBUILT (IN OR NEAR EXISTING ROW)  
 - - - EXISTING AEP TRANSMISSION (115-230 KV)  
 — ROAD  
 — STREAMS (NHDI)  
 — WETLAND (NHDI)  
 — WATERBODY (NHDI)  
 — PARCEL BOUNDARY  
 — ARCHITECTURAL RESOURCE (VCRS)  
 — COUNTY BOUNDARY

Transmission line routes are preliminary and subject to change  
 1 inch = 200 feet  
 when printed at 22x34  
 0 200 400 600  
 Feet  
 Imagery Source: ESRI Aerial Imagery  
 October 09, 2020



**Aerial Map 11 of 11**  
**Reusens – New London**  
**Transmission Line**  
**Rebuild Project**