

# CENTRAL VIRGINIA

## TRANSMISSION RELIABILITY PROJECT

### SHIPMAN - SCHUYLER



Appalachian Power representatives plan to upgrade the local electric transmission grid in Virginia. The Central Virginia Transmission Reliability Project provides a new electrical source for the region, increases reliability for customers and supports the retirement of aging equipment. The project includes several phases throughout the next few years.

The Shipman - Schuyler phase involves building two new substations in Nelson County. Company representatives expect construction for this phase to begin at the end of 2022 and conclude by Fall 2023.

## WHAT

The Shipman - Schuyler phase includes:

- Building the new James River Substation and Soapstone Substation
- Building less than a quarter of a mile of transmission line to connect each new substation to existing lines
- Retiring two substations in the towns of Shipman and Schuyler

## WHY

The project:

- Provides a new electrical source for the region
- Increases reliability for customers
- Supports the retirement of aging Infrastructure

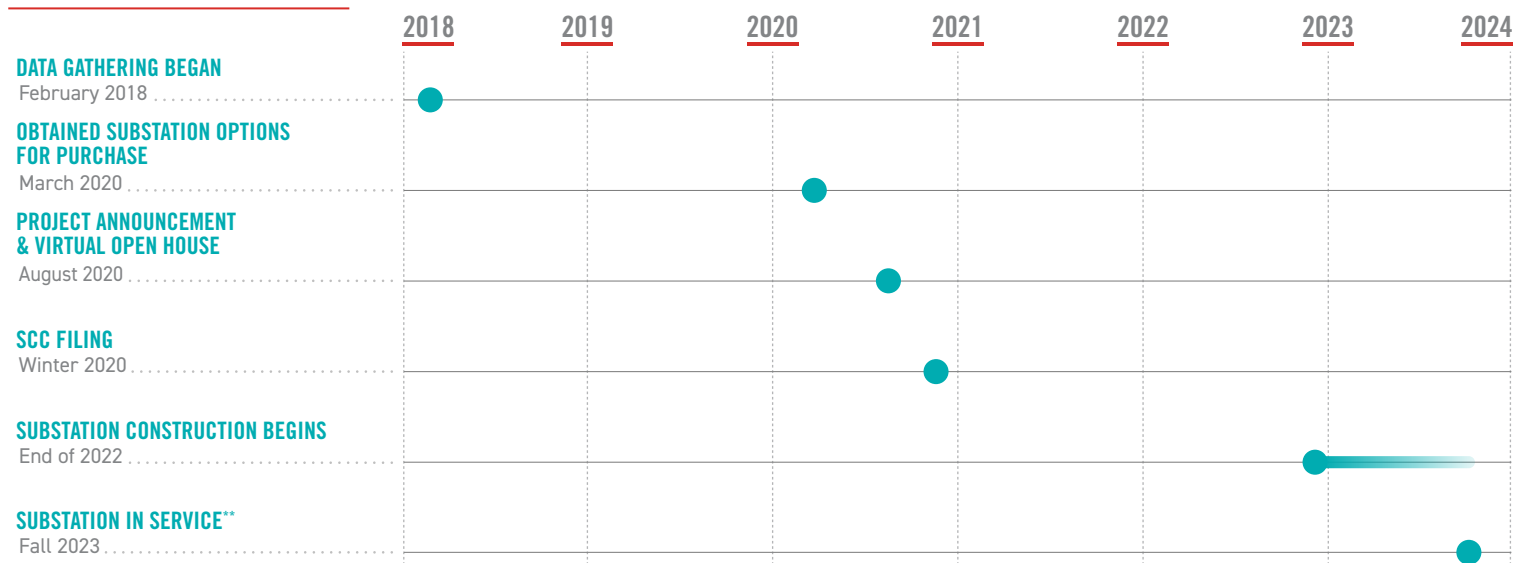
## WHERE

The upgrades are in Nelson County.

Plans involve:

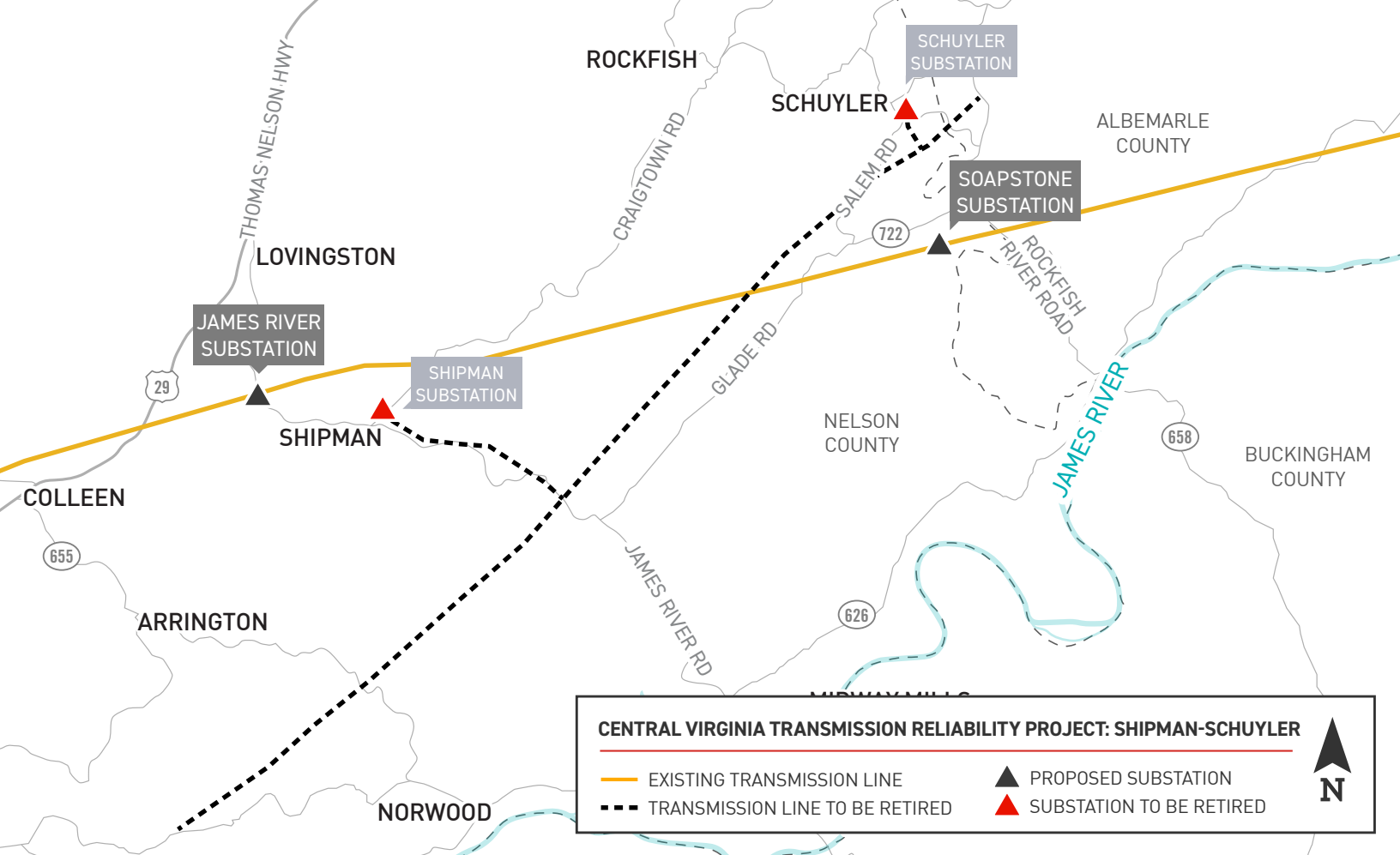
- Building the new James River Substation off James River Road to replace the existing Shipman Substation, located off Craigtown Road
- Building the new Soapstone Substation off Rockfish Crossing to replace the existing Schuyler Substation, located off Salem Road
- Work will occur on property owned by Appalachian Power

## PROJECT SCHEDULE

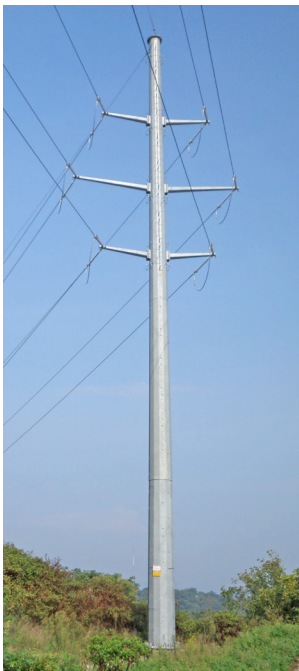


\*\*Retirement of aging infrastructure will occur at a later date.

\*Timeline subject to change.



## TYPICAL STRUCTURES



Crews plan to build less than a quarter of a mile of transmission line, on Appalachian Power property, to connect the new substations to existing lines. Plans call for using single steel poles when building the line.

Proposed Structure Height:  
Approximately 100 -120 feet\*

\*Exact structure and height may vary

## TYPICAL SUBSTATION

Substations serve as electrical intersections converting the power to voltage levels for use in homes, businesses and industrial facilities.



\*Substation shown is a general depiction of the proposed facilities for the project. It does not represent final design.

APPALACHIAN POWER VALUES YOUR INPUT ABOUT THIS PROJECT. PLEASE SEND COMMENTS AND QUESTIONS TO:

**CORTNEY MUSTARD**

Project Outreach Specialist | 833-313-3743 | [camustard@aep.com](mailto:camustard@aep.com)

[www.AppalachianPower.com/CVTRP](http://www.AppalachianPower.com/CVTRP)



BOUNDLESS ENERGY™

08/03/2020