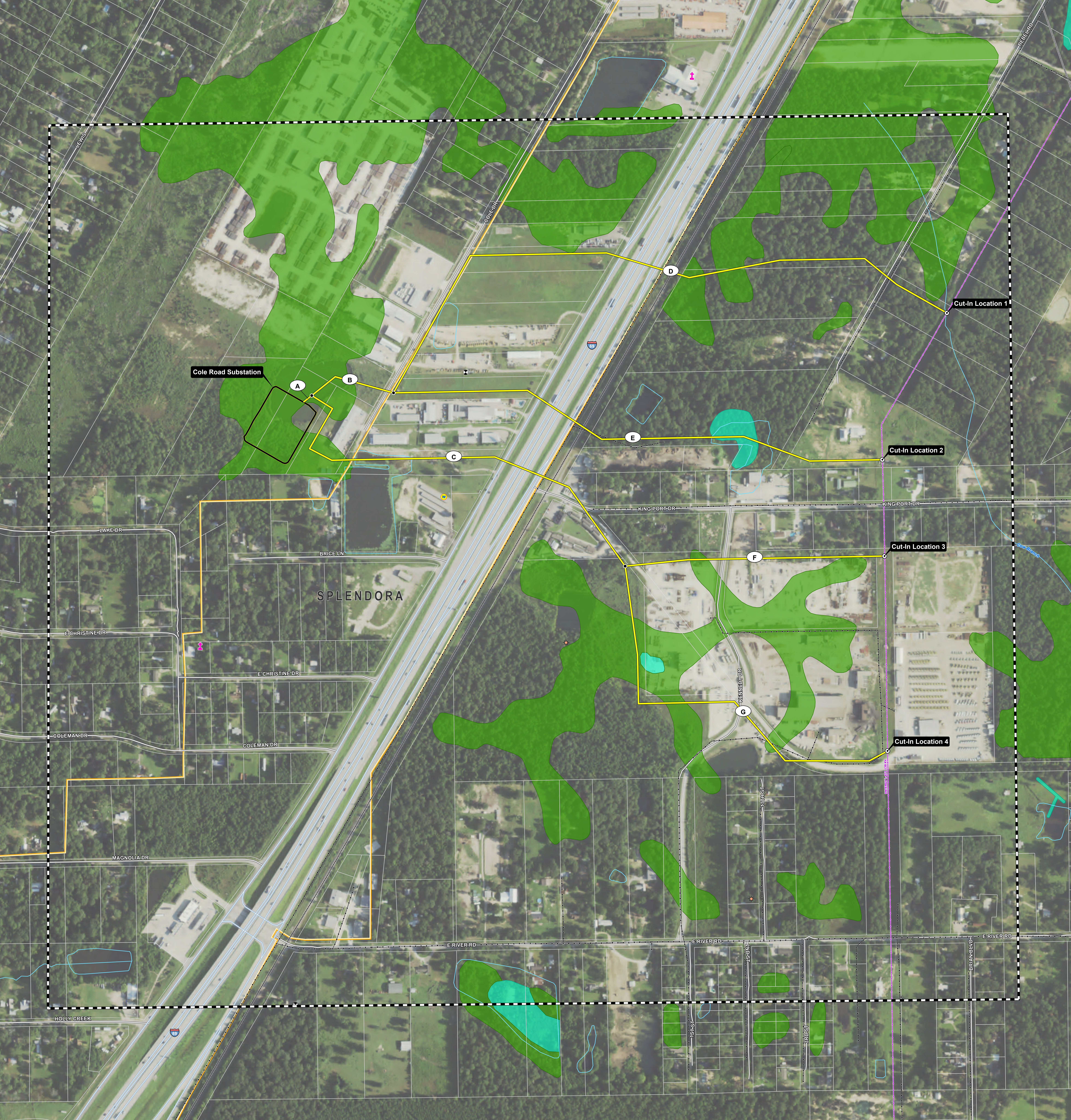


Project Features Study Area Boundary Preliminary Alternative Segment, Node, and Label Alternative Cut-In Location Substation Site Boundary	Existing Utility Features 138 kV Transmission Line Existing Entergy Distribution Line	Land Use Features FM, Cellular, or Microwave Communication Tower Church Water Well Oil / Gas Well	Transportation Features Interstate Highway County / Local Road Railroad	Hydrologic Features NHD River / Stream NHD Waterbody	NWI Mapped Wetland Freshwater Emergent Wetland Freshwater Forested/Shrub Wetland	Administrative Features Municipal Boundary County Boundary Parcel Boundary	<div style="text-align: right;"> COLE ROAD 138 kV TRANSMISSION LINE PROJECT PRELIMINARY ALTERNATIVE SEGMENTS WITH ENVIRONMENTAL CONSTRAINTS Date: 6/16/2024 Meters </div>
---	--	--	---	---	---	--	--

Preliminary and Subject to Change



This map is a preliminary representation of the project and is not intended for construction. It is subject to change without notice. The project is subject to environmental review and public input. The project is subject to the National Wetlands Inventory (NWI) and the National Hydrography Dataset (NHD). The project is subject to the National Flood Insurance Program (NFIP) and the National Flood Hazard Mitigation Plan (NFHM). The project is subject to the National Environmental Policy Act (NEPA) and the National Environmental Restoration Act (NERA). The project is subject to the National Historic Preservation Act (NHPA) and the National Historic Landmarks Act (NHLA). The project is subject to the National Antiquities Act (NAA) and the National Monuments Act (NMA). The project is subject to the National Trails System Act (NTSA) and the National Trails Act (NTA). The project is subject to the National System of Public Lands (NSPL) and the National System of Public Rangelands (NSPR). The project is subject to the National System of Public Lands (NSPL) and the National System of Public Rangelands (NSPR).